

# eDoc Process Editor

Modifying your processes faster than ever before

## Flexible BPM

By opting for eDocumentus, companies can acquire effective business solutions with the benefits of standardization. eDoc Process Editor provides the possibility of in-house process customisation which can significantly improve a companies flexibility in competitive fast-moving industries such as telecommunications, financial services, pharmaceuticals and media. Banks and Insurance companies, for instance, build custom applications to support new financial legislations or to manage various processes that are subject to frequent procedural changes.

eDoc Process Editor brings significant savings to companies that require frequent in-house business process modifications. eDoc Process Editor is a visual tool for creating definitions for the workflow process which are ready and adjusted for execution within the eDocumentus BPM engine.



Puškinova 26  
Novi Sad, Serbia  
P: +381 21 47 20 200  
F: +381 21 45 12 16  
[www.prozone.rs](http://www.prozone.rs)

# eDoc Process Editor

## In-house Flexibility

This editor is fully based on the standard adopted by WfMC (Workflow Management Coalition), an organisation responsible for defining standards in the field of workflow. One of the standards of this organisation is the standard for modeling business processes (XPDL standard) which is fully supported by the eDocumentus Process Editor.

## Features

The visual interface of the eDocumentus Process Editor allows for easy modeling of the business process by the insertion of graphic elements that represent participants in the process, along with the activities of the process and the transitions that connect them. Additional information on process variables and their types, definitions of applications being executed and so on, are all modeled by a powerful panel system where each detail of the process execution can be described.

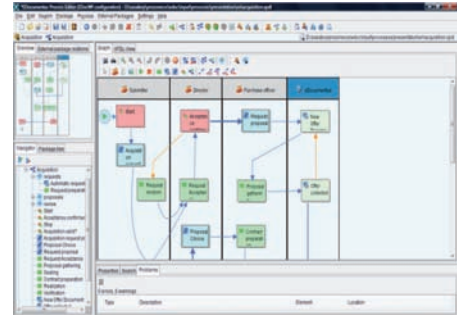
The editor is fully adjusted to the requirements of eDocumentus. The editor has been additionally adjusted so that users do not have to worry about defining XPDL sections that are standardised for every eDocumentus based XPDL model.

Along with the adjustability to eDocumentus, this editor comprises all features of standard modeling editors such as: Undo-Redo support, which in the case of eDoc Process Editor records all changes to the XPDL model.

View of XPDL model in one of the following layouts:

- Tree, for navigation through the processes in the model
- Tree, which contains the full model presentations with all details
- Graphic, which is used for typical process flow modeling
- Text, where an XDML case is presented in a form it will appear after saving it on the file system
- Validation, of an XPDL document based on the rules of XPDL specification
- Search, XPDL model
- Search and view, references on the selected model entity
- View, correlation between main XPDL case and its so-called external XPDL cases

Through the use of the eDocumentus Process Editor, the modeling and updating of business process models for document and case manipulation in eDocumentus, becomes much easier and is less prone to errors. The editor is closely integrated with the eDocumentus system which further increases development efficiency. Simple access to eDocumentus data during the development phase of the process model is established, along with an easy model update.



*eDocumentus Process Editor*

A screenshot of the 'Create options' dialog box in the eDocumentus Process Editor. The dialog has a title bar and a standard Windows-style interface. It contains several sections: 'Case' with a search icon; 'Document store' with a dropdown menu set to 'Document store 01'; 'Document type' with a dropdown menu set to 'Folder - Contracts'; 'Folder' with a dropdown menu set to 'Folder - Contracts'; a checked checkbox for 'Mandatory(T,F)'; an unchecked checkbox for 'Checked'; a 'Name' text field; three unchecked checkboxes for 'Import document from file system', 'Create document from template', and 'Create from existing document'; a 'Pattern' text field with a search icon; three unchecked checkboxes for 'Suppress description', 'Hide document attributes', and 'Show mandatory attributes'; a 'Document attributes' section with a search icon and a table with two columns: 'Id' and 'Value'; and a 'Document' dropdown menu set to 'Contract'.

*Modelling of specific eDocumentus attributes for connection of DM and Workflow system*



Puškinova 26  
Novi Sad, Serbia  
P: +381 21 47 20 200  
F: +381 21 45 12 16  
www.prozone.rs